

❖ Perception of Stimuli

Sensory receptors act as energy transducers.

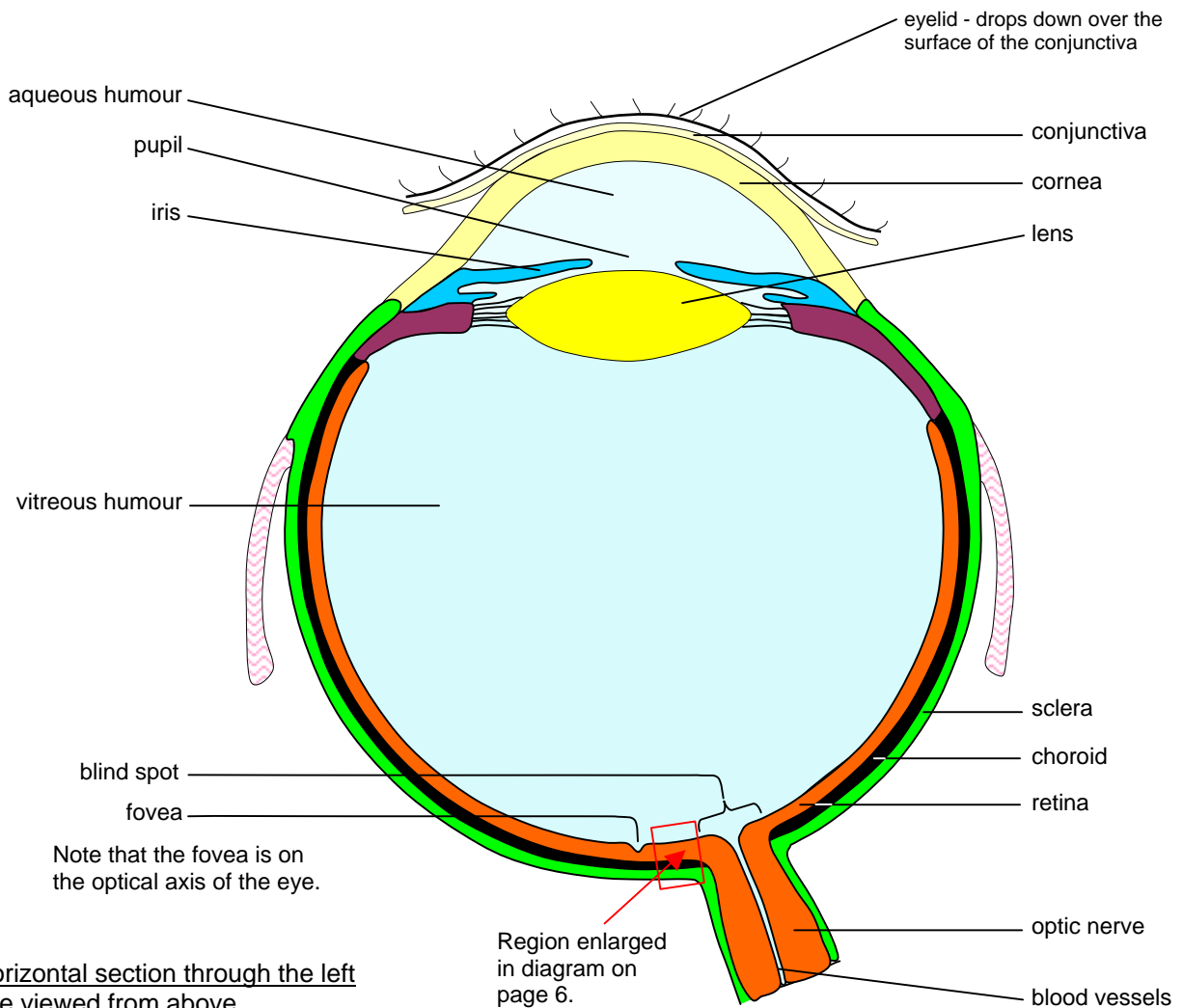
A transducer converts the energy of the stimulus into an electrical nerve impulse.

Human sensory receptors are classified as -

- mechanoreceptors;
- chemoreceptors;
- thermoreceptors;
- photoreceptors.

	Mechanoreceptors	Chemoreceptors	Thermoreceptors	Photoreceptors
Stimulus	Mechanical deformation	Chemicals	Temperature	Light
Types	Stretch receptors in muscles are used to position muscles in co-ordinated movements.	Carbon dioxide receptors in carotid bodies on carotid arteries lead to regulation of breathing.	Hypothalamus measures temperature of blood for temperature homeostasis.	Rods in the retina are sensitive to low light intensities

The Human Eye



Horizontal section through the left eye viewed from above.