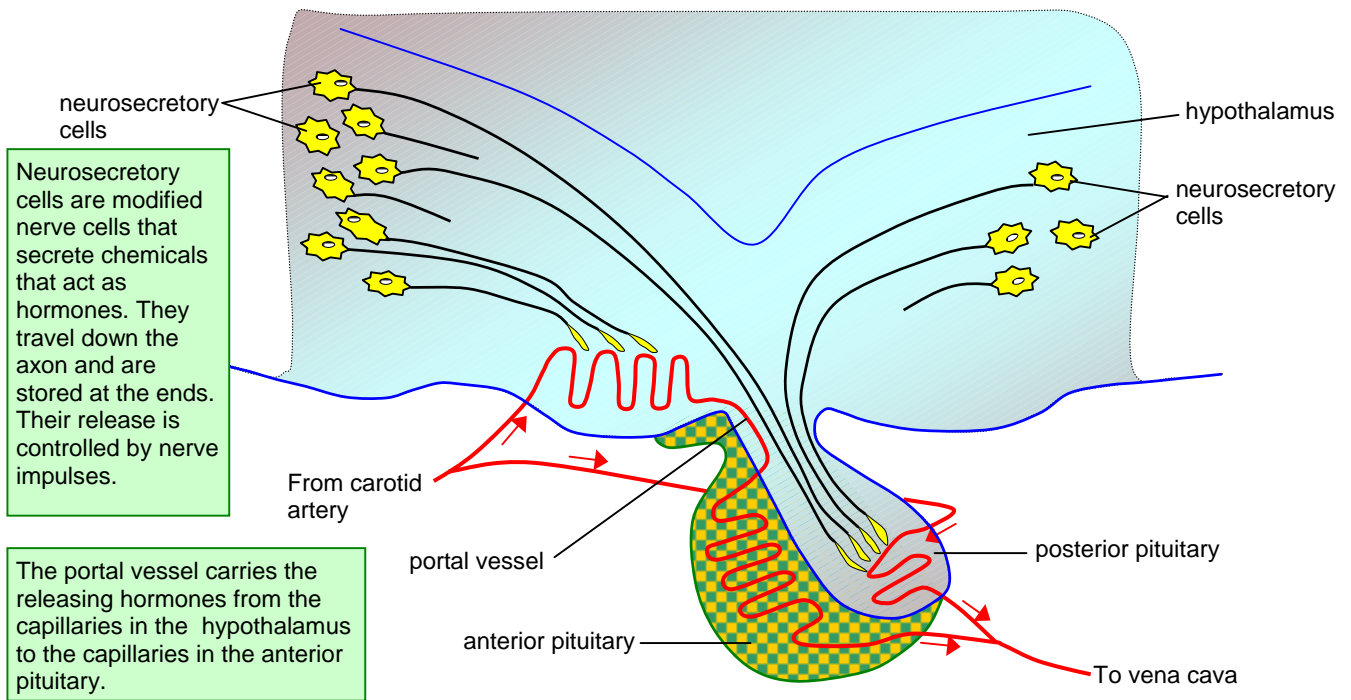


Hormonal Control

The Hypothalamus and Pituitary Gland

Key features

- The pituitary gland has two parts.
- The posterior pituitary is part of the brain and connected to it directly. It simply stores hormones that have been produced by neurosecretory cells in the hypothalamus. Examples are ADH and oxytocin.
- The anterior pituitary is a separate glandular structure producing its own hormones. The release of these hormones is still controlled by the brain by another set of hormones, called releasing hormones, produced by the hypothalamus. An example is thyroid stimulating hormone controlled by thyrotropin releasing hormone.



Control of Thyroxin Secretion

Key sequence

